



THE RETREAT  
TOWNHOMES

*Exclusively by*

ZENODRO  
HOMES



# *An introduction to Zenodro*

Smart, beautiful and functional design is at the heart of what we at Zenodro Homes are about. Throughout Central Florida, we're renowned for quality. Working with some of the best people in their particular industry, from architecture right through to the finishing touches, we build homes that you're proud to call your own.

Each one a home away from home, in beautiful locations with a real community feel, a Zenodro home is more than just for vacations. It's somewhere you'll want to come back to time and time again.



## *The Retreat at Dream*

Dream is a resort-style community located in the heart of the vacation capital of the world, the Four Corners region of greater Orlando, Florida. It is 145 acres of endless nature and conservation.

Nestled within is The Retreat, an eco-friendly vacation home community made up of 88 welcoming townhomes, and neighborhood amenities including a solar powered clubhouse and swimming pool. The Retreat offers an escape from the everyday.

It is one of six neighborhoods within Dream. The others are Serenity, Tranquility, Hidden Forest, Hidden Lakes, and Sunrise Pointe. All have been designed with distinctive features such as solar powered streetlights, serene water views, and a peaceful setting surrounded by Florida's natural beauty.

Dream's features, coupled with its prime location ten minutes from Disney, make it the perfect place to call home

A modern kitchen interior featuring white cabinetry, a green accent wall, and stainless steel appliances. A white countertop with a sink and faucet is visible on the left. A dining table with a green glass top and white chairs is in the foreground. A white semi-transparent box is overlaid in the center, containing text.

## *Zen-Eco Home*<sup>™</sup>

The Retreat features our newest innovation, ZEN-ECO HOME<sup>™</sup>; these homes are crafted with the latest construction technologies and modern interior design.

## AT ZENODRO, ECO HAS TWO MEANINGS.

First and foremost we seek to build ECO-logically friendly homes by implementing today's best building practices such as the use of energy efficient appliances, Low E double pane insulated windows, high performance air conditioning systems, high performance spray foam insulation, and solar powered street lights.

These are some of the steps Zenodro has taken in crafting your home in order to help reduce energy consumption and improve the quality of life for you, our future homeowners.

Secondly, our homes and communities are built ECO-nomically friendly. When compared to conventionally built homes, a ZEN-ECO HOME™ is capable of delivering a significant reduction in the cost of home ownership.



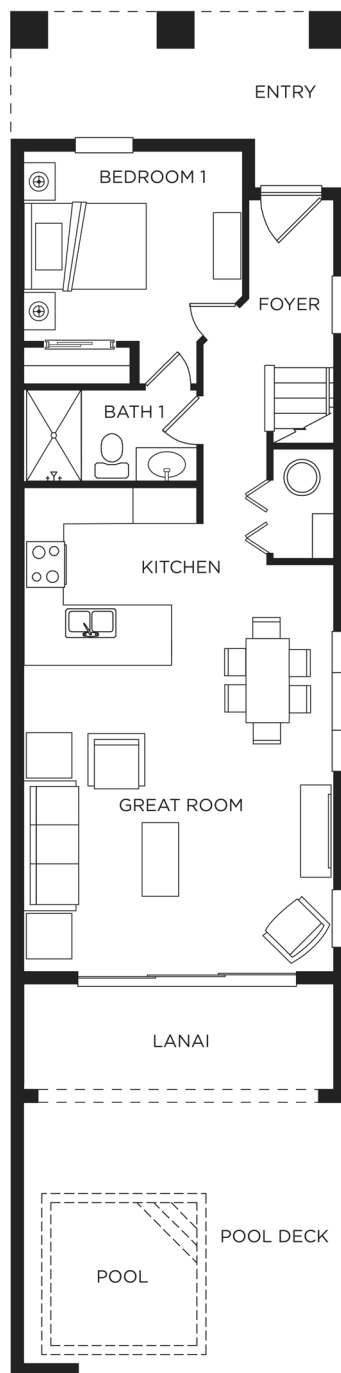
# Eliora

Each of our Eliora townhomes offer modern living at its very best. Bright and spacious, with your own private pool, you'll find everything you need right here.

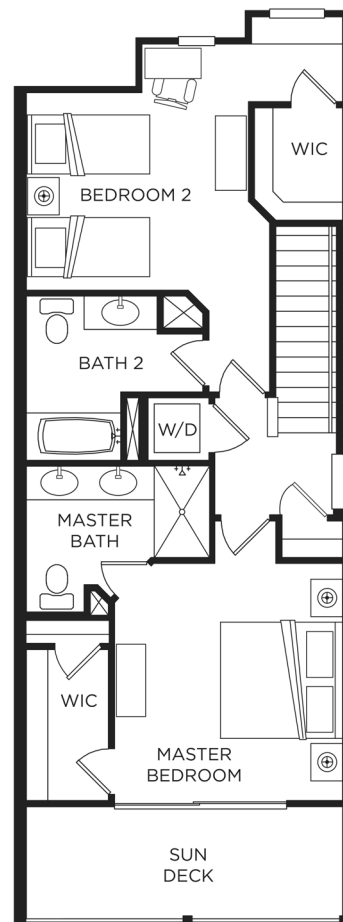
## FLOORPLANS & SPEC

- 2,153 total sq foot
- 200 sq metres
- 3 bedrooms
- 3 bathrooms
- Private pool
- Open plan kitchen and living area
- Sun deck

FIRST FLOOR



SECOND FLOOR





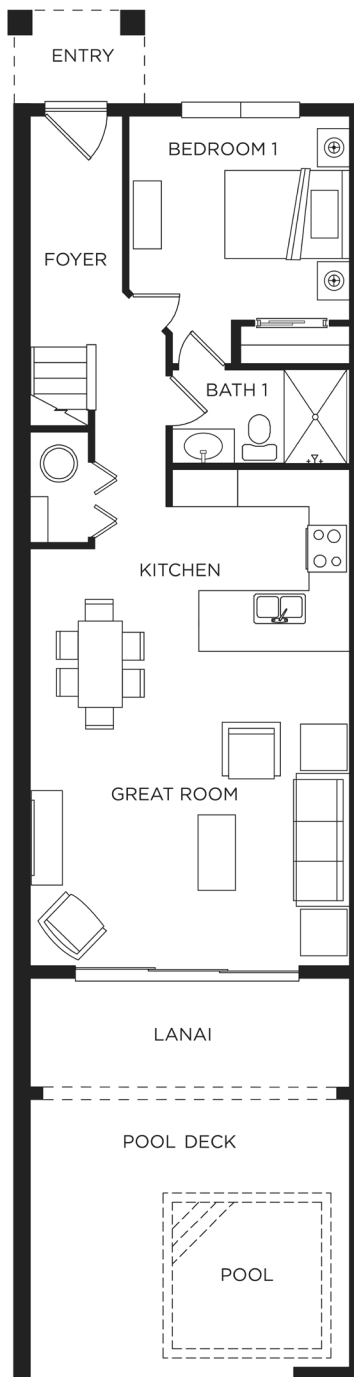
# Adalia

Beautifully designed, right down to the smallest detail, an Adalia townhome provides refuge. It's the perfect place to plan your day's adventures.

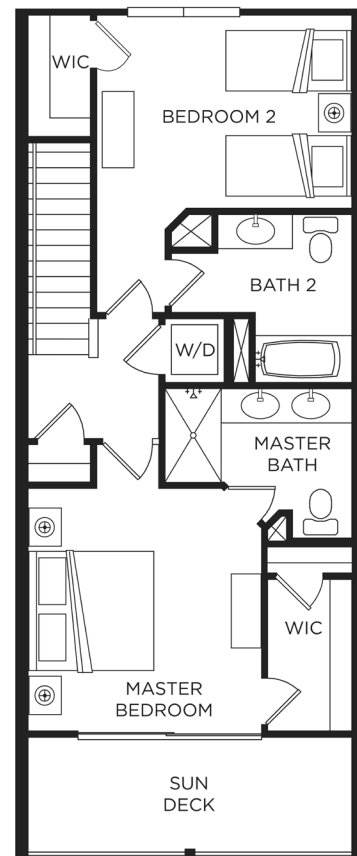
## FLOORPLANS & SPEC

- 2,038 total sq foot
- 189 sq metres
- 3 bedrooms
- 3 bathrooms
- Private pool
- Open plan kitchen and living area
- Sun deck

FIRST FLOOR



SECOND FLOOR



# Unit Details

## ZEN-ECO STANDARDS

14 Seer Variable Speed A/C System  
Fresh Air Damper System  
Aluminum Energy Efficient Low E 9' 0" Wide  
8' 0" High Sliding Glass Doors  
Attic and Framed Wall Spray Foam Insulation  
Block Wall Core Filled Masonry Insulation  
Energy Star Rated Appliances  
Designer Low Flow Water Fixtures  
Remotely Controlled and  
Programmable Thermostats  
Solar Powered Street Lights  
Energy Efficient Double Pane Insulated  
Tilt Sash Low E Vinyl Windows

## LIVING AREAS

9' 4" High Ceilings on 1st Floor  
9' 0" High Ceilings on 2nd Floor  
24" Porcelain Tile Throughout First Floor  
5 1/4" Colonial Style Wood Baseboard  
2 1/4" Baby Howe Style Wood Casing  
Designer Window Sills  
Stacked Washer and Dryer Laundry Center  
Recessed Lighting  
Upgraded Carpet and Padding on Stairs  
and 2nd Floor Common Areas

## KITCHEN

24" Porcelain Tile Floor  
European Style Wood Cabinets with Thermafoil  
Doors and Stainless Steel Hardware  
Stainless Steel Energy Package: Electric  
Range with Oven and Glass Cooktop, Over  
the Range Microwave, Dishwasher, and Side  
by Side Refrigerator with Built-in Icemaker  
and Water Dispenser  
Granite Countertops with Full Height Backsplash  
Granite Breakfast Bar with Waterfall Edge  
Designer Kitchen Faucet  
Walk-In Pantry

## BATHROOM

24" Porcelain Tile Floor  
Floor to Ceiling Porcelain Tile Shower  
with Accent Tile  
Designer Wall Mounted Sconces  
Elongated Low Flow Toilets  
European Style Wood Cabinets with Thermafoil  
Doors and Stainless Steel Hardware  
Granite Countertops with 4" Backsplash  
Designer Bath, Shower, and Sink Faucets  
with Matching Bathroom Hardware

## MASTER BEDROOM

En-suite Master Bathroom  
Large Walk-In Closet  
Private Sun Deck  
Upgraded Carpet and Padding

## SECONDARY BEDROOMS

En-suite Bathroom  
Upgraded Carpet and Padding  
Walk-In Closet

## EXTERIORS

Aluminum Screen Enclosure  
Brick Paver Patios and Entry Porches  
Fully Landscaped Home Site  
Rain Gutters Throughout  
Private Heated Pool  
Upgraded 6-Panel Front Door

## OPTIONS

Premium Options are available for  
Appliances, Counter Tops, Fan Package,  
Flooring, Paint, and Plumbing Fixtures



*All plans and elevations are artist renderings and may vary somewhat in precise detail and dimensions. All measurements are approximate. Builder reserves the right to change or alter materials, specifications, features, dimensions, designs and price without prior notice*





*"Just completed on our second house. Service is absolutely brilliant."*

PAULINE THAIN



## *Eco Club™*

The Retreat ECO-CLUB™ offers you and your guests amenities such as a fitness center, game room, sun bathing area, covered outdoor seating, hot tub and resort-style pool to ensure that your vacation is perfect in every way.

# Community Plan

## AMUSEMENT PARKS

Animal Kingdom 10 Min  
 Epcot 10 Min  
 Hollywood Studios 10 Min  
 Magic Kingdom 10 Min  
 SeaWorld 15 Min  
 Universal Studios 20 Min

## GROCERIES

Publix 5 Min  
 Target 5 Min  
 Walgreens 5 Min  
 Walmart 24hrs 5 Min

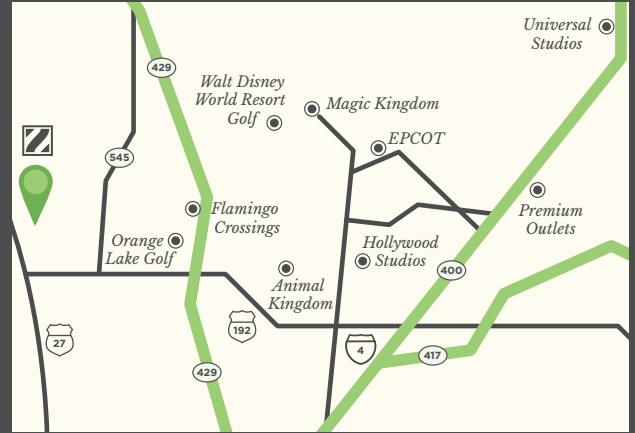
## GOLFING

Highlands Reserve Golf 5 Min  
 Legends Golf & Country Club 10 Min  
 Orange County National Golf 10 Min  
 Orange Lake Golf 5 Min  
 Polo Park East Golf 5 Min  
 Walt Disney World Resort Golf 10 Min

## SHOPPING

Flamingo Crossings 10 Min  
 Florida Mall 25 Min  
 Premium Outlets 15 Min  
 Premium Outlets 25 Min  
 Mall at Millenia 25 Min

## LOCATION MAP






# *Family, Friends and Community*

*At Zenodro you're more than just a client – but a much-valued member of our close family joining employees, other property buyers and members of the community to form a very special group of people.*

Zenodro Homes has built over 250 homes in Central Florida. Our team's expertise ranges from Custom Luxury Residences, complete Vacation Home Communities, Residential Condominium Communities and Single Family Home Communities. We work with internationally recognized architects and interior designers to set ourselves apart and leave no stone unturned.



*“We’re thrilled by the quality of our new property and the professional service provided.”*

RUTH LOWE

*“Best built townhouses in the Disney area. Your vacation starts here!”*



DANNY KILGORE

WWW.ZENODRO.COM

*info@zenodro.com +1 407 831 4600*

---

*Join the Zenodro family*



---

*17345 Serenidad Boulevard*

*Clermont, Florida, 34714*



**ZENODRO**  
HOMES